



SIVACHROM EFFECT SYSTEM
**SURFACE
EVOLUTION**

The solution offered by SIVAM Coatings to reach designers, architects and companies looking to added value to their products. It include a set of converters, effect pastes and clear pigmented colorants, which allow the creation of many different finishes with a high aesthetic level to elevate the value of customer projects.



sivam.it



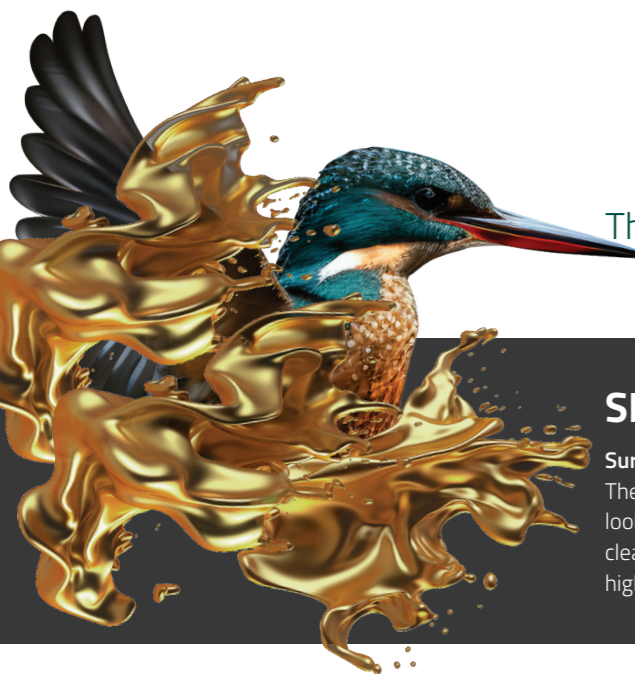
SIVAM Coatings S.p.A.
Via Monviso, 10
20008 Bareggio (MI) – Italy
T +39 02 903041
E info@sivam.it



MADE IN ITALY



EST. 1949 | MILAN



Kingfisher Color System

The world of color at your disposal

The Kingfisher Color System spans the extensive spectrum of colors accessible to the woodworking industry and beyond, efficiently characterizing, formulating, and replicating colors. The harmony between the coatings and sophisticated tools enables the precise and easily reproducible attainment of colors.



Kingfisher Surfer

Speed up your color formulation

Software designed to contain and simplify the experience for anyone wishing to access SIVAM Coatings color formulas. It is user-friendly and intuitive, enhancing the accessibility and management of numerous formulas.

Available fandecks: RAL, NCS, Matrix Effect, Makolor Mix, Kingfisher Color Classic and Evolution.

SIVACHROM EFFECT SYSTEM

Surface evolution

The solution offered by SIVAM Coatings to reach designers, architects and companies looking to added value to their products. It include a set of converters, effect pastes and clear pigmented colorants, which allow the creation of many different finishes with a high aesthetic level to elevate the value of customer projects.

SIVACHROM EFFECT SYSTEM - MATRIX

Explore Sivachrom Colors on Kingfisher Surfer

The new color card showcases the vast range of color opportunities with the Sivachrom Effect. All formulas are available on Kingfisher Surfer.

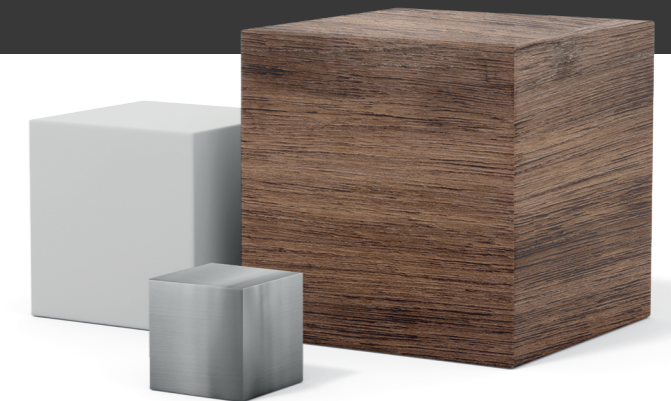
CONVERTERS - TINT BASES

A converter developed to ensure homogeneity and stability during the preparation and application phases of the Sivachrom Effect system.

PRODUCT	DESCRIPTION	PRIMER	TOPCOAT	CATALYZATION	APPLICATION	DRYING TIME	SURFACE HARDNESS
CONVERTER FOR WOOD							
ACRYCHROM EFT CONV 377 LXC377	Semi-glossy Acrylic 2k converter	Strictly suggested	Mandatory	LCB048 (20%)	Spray	24 h	Low
CONVERTER FOR PLASTICS & NON-FERROUS METALS							
MULTIPLASTACRYL EFT A10 PNA105	Semi-glossy Acrylic 1k converter	Needed if special adhesion requested	Suggested to improve resistances	-	Spray	12 h	Excellent
CONVERTER FOR METALS							
MULTIACRYL EFT A10 MCA101	Matt Acrylic 2k converter	Needed if corrosion protection requested	Suggested to improve resistances	MKM800 (20%)	Spray	24 h	Excellent
MULTIACRYL EFT A10 MCA107	Semi-glossy Acrylic 2k converter	Needed if corrosion protection requested	Suggested to improve resistances	MKM800 (20%)	Spray	24 h	Excellent

Many substrates One solution

Wood
Plastics
Ferrous, non-ferrous metals



TINT BASE



15% - 25%
SIVACHROM EFFECT

TINT BASE



MAX 5%
CLEAR PASTE

TINT BASE +
SIVACHROM EFFECT

EFFECT PASTES

Ready for use, it replaces metallic powders, facilitates mixing and dispersion within the converters, and optimizes the production cycle and effect reproducibility.

ALUMINIUM

Different grade of aluminium particles



KXT900
EXTRA-FINE GRADE
KXT906
FINE GRADE
KXT911
MEDIUM GRADE
KXT921
ROUGH GRADE

PEARL

Different interferential pearls



KXT931
WHITE PEARL
KXT932
GREEN PEARL
KXT933
BLUE PEARL
KXT934
RED PEARL

COATED ALUMINIUM AND PEARL

Gold, copper and bronze effects



KXT961
LIGHT GOLD
KXT962
DARK GOLD
KXT963
BRONZE GOLD
KXT971
COPPER
KXT972
BRONZE

CLEAR PASTES

Different semi-transparent pigment



KXT202
CLEAR BLACK
KXT203
CLEAR YELLOW
KXT205
CLEAR RED
KXT218
CLEAR VIOLET
KXT219
CLEAR BLUE
KXT229
CLEAR GREEN

Allows for effect customization, creating an infinite range of shades and solutions.

FRIENDLY LABELING

The new series of metallic pastes has a bio-based content and is aromatic-free to ensure eco-friendly approach.



BIO-BASED CONTENT

Bio-based materials made from and sourced from renewable resources.



AROMATIC FREE

Aromatic compounds (such as benzene, toluene, etc.) are known to be toxic and carcinogenic. Reducing exposure to these compounds can improve the health of workers and end users.

